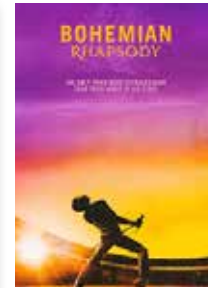
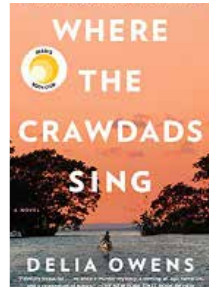




GLEN ELLYN PUBLIC LIBRARY 2020 SNAPSHOT

2020 MOST REQUESTED TITLES

15,720 Registered Users



DRIVE-UP WINDOW



18,785
Visits

313% increase

THE CAFE

In 2020, The Cafe at the Glen Ellyn Public Library expanded its offerings to include more gluten-free, vegan, and no added sugar options as well as specialty Bistro Boxes, celebration cakes available for pre-order, and signature recipes developed by famous chefs. All menu items are made from scratch in The Cafe's peanut and tree nut-free kitchen. The Cafe is open during library hours and closes 30 minutes prior to the library closing each day. Curbside service is available. Please call 630-790-6772 to order.

VIRTUAL MEETINGS



439
Events

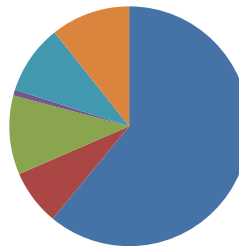
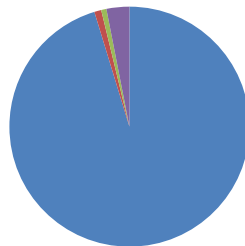
March-December

FINANCIALS

Revenue

Expenditures

Property Taxes [95%]	\$4,719,791.00
State/Federal Grants [1%]	\$46,316.00
Gifts [1%]	\$35,008.00
Other [3%]	\$168,356.00



Personnel [61%]	\$2,838,377.00
Building & Equipment [7%]	\$348,042.00
Materials [11%]	\$496,415.00
Programs [7%]	\$36,091.00
Operations [9.3%]	\$436,060.00
Debt Services [11%]	\$497,913.00



192,312

Number of visits
to gepl.org

87,589

Total loans
of e-material

CONVERSION KITS

To better serve the community outside of the building, the library adapted some of the capabilities of the Conversion Room and Digital Media Lab into Conversion Cases and Equipment Express. Members can now check out the supplies they need for conversion tasks as well as creating and editing music and video!

Conversion Cases:

- 8mm Video to Digital or DVD
- VHSC Video to Digital or DVD
- Print Material, Slides, or Negatives to Digital

Equipment Express:

- Digital Audio Recording (Podcasts)
- Digital Audio Recording (GarageBand)



Please contact Joe Halter at jhalter@gepl.org or 630-423-6664 to arrange to borrow a Conversion Case or Equipment Express.



37,332

Total number of
program attendees
(virtual and
in person)
14% increase

DIGITAL LIBRARY RESOURCES

Greatest increase: Axis 360
Second greatest increase: Hoopla



92.4%



89.9%

